

# The Enterprise Challenges

This year the Enterprise challenges are designed to get students to demonstrate certain skills linked to enterprise. The skills are listed below. You will have only about a week to do each task which will then be scored. Enterprise is about the students doing the work. At the end of the year a prize will be awarded to the top mentor group in each school. There will also be a prize for the best overall school.

- communication
- team working
- innovation
- problem solving
- creativity
- delivering presentations
- risk taking
- decision making
- self assessment



INNOVATION  
SUCCESS  
EVALUATION  
DEVELOPMENT  
GROWTH  
SOLUTION  
PROGRESS  
MARKETING



# The Enterprise Challenge 1

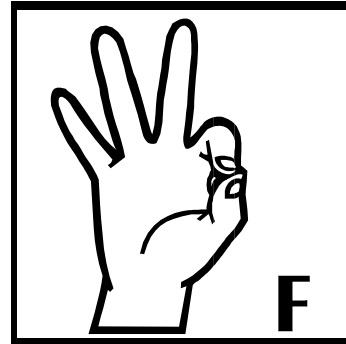
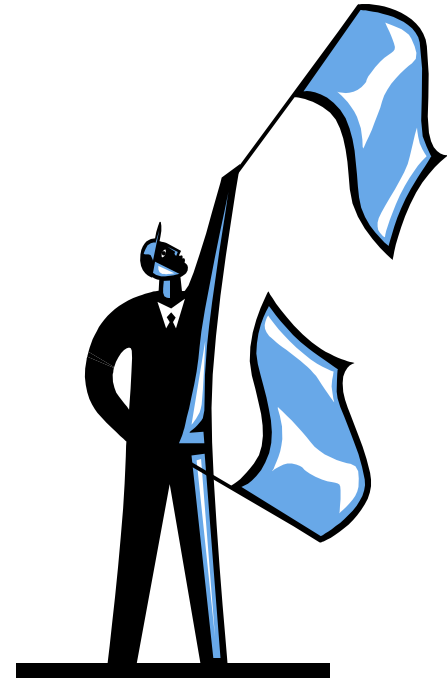
Good **communication** skills are essential for Enterprise as you will need to know when to listen, when to be assertive and how to negotiate.

Communication takes many forms but the most common ones we use are written and spoken forms.

**Your task is to create a new alphabet that could be used for one or more types of communication. Think about**

- What sounds you need
- How to represent those sounds
- How easy it is to learn
- How easy it is to use

You may work as a class or in groups. Try using the alphabet to communicate with each other. This could become unique to your mentor group. Your work will be judged on how innovative the alphabet is and how easy it is to use. One alphabet per mentor group needs to be given to **Ms Quigley** by **Friday 5<sup>th</sup> November**



**Teacher tip. Not all alphabets have the same number of letters. Some alphabets use symbols to represent sound. There are clues on this page**

